

DeltaTM3PD



MARPOSS
TECNA

MODULE FOR LEAK TEST WITH DIFFERENTIAL METHOD ON AUTOMATED SYSTEM



- Leak test up to 30 bar
- Resolution up to 0.1 Pa, differential full scale from 10 to 50 mbar
- Fully integrated pneumatics and electronics
- Test time reduced
- Ease of use and installation
- Digital interface for PLC
- Communication Interfaces RS485 and USB
- Up to 300 test tables



DESCRIPTION

DELTA TM3PD pneumatic modules represent the blend of traditional leak test equipment and are the best solution to integrate a reliable and compact testing station into your automated system.

The absence of buttons and displays has allowed to reduce overall dimensions, so as to ensure their placement in any type of system, as close as possible to the component under test, minimizing unnecessary

volumes and increasing the speed and sensitivity of the test.

DELTA TM3PD pneumatic modules can be connected and controlled by any PLC.

DIFFERENTIAL PRESSURE DECAY

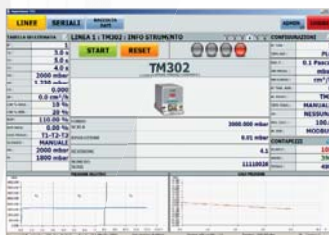
The testing cycle is based on a comparison between the product being tested and a reference volume. In this way, the effects of the pressure settlement inside the tested product are reduced and the accuracy in detecting a leak rate is increased, achieving excellent results in a quicker interval.

ABSOLUTE PRESSURE DECAY

The testing cycle is based on the pressure decay measured inside of the component being tested, which must be below the set limit to pass the test.

TEST

DELTA TM3PD can be interfaced to:



Software Manager, dedicated for TM3 modules management data storage and statistical process



• Traditional PLC systems



• HMI fully Interfaceable: USB, Serial lines RS485/232, Ethernet to manage up to 8 TM3 modules

Delta TM3PD

Rev.09/22

SPECIFICATION

Power Supply	24 Vdc - 1 A max
Compressed Air Line	Dry, non-condensing, 5-micron filtered, and oil-free air, compliant with ISO8573-1, 6x4 mm hose fitting hose connection 4x2.5 / 6x4 / 8x6 mm Pilot pressure compatible with the instrument full scale
Sensor Calibration	Remote control software procedure
A/D Converter	2x24 bits
Pressure Regulator	External (option)
Indicators	4 LEDs: two yellow (test phases), green (passed), red (failed)
Test Counter	PASSED and FAILED totals, resettable to zero
Clock	Date and time, with supercap, 7 days back up max
Programmable parameters	Up to 300 testing tables, general testing parameters
PLC Connections	2 photocoupled inputs: START / RESET 4 photocoupled outputs: TEST RUNNING, PASSED, FAILED, ALARM 3 additional digital input (-I3)
Data Interfaces	RS485 and USB communication interfaces with Modbus protocol
Staubli® Connector	Available on external connection for leak masters (option)
Housing	Unpainted aluminium

ACCESSORIES

- Pressure regulator
- Air filters

CUSTOMIZED SOFTWARE FOR HMI TERMINAL/PC

- Software to collect and manage the data of the tests
- Viewing and management of several testing stations
- Parameter programming and SPC analysis of test data
- Virtual Instrument for National Instruments LabVIEW™ available at request

CALIBRATION SERVICE

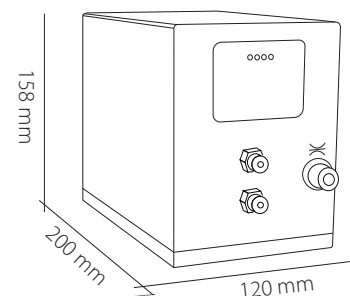
Each equipment is accompanied by a calibration report released by Tecna srl. According to the requirements of ISO9001 standard, calibration must be verified at specified intervals against national or international test masters. Tecna srl, through its own specialized personnel and certified instruments, offers a complete scheduled calibration service.

HMI TERMINAL

Weintek MT8050iE operator terminal with 4.3" touchscreen display, 2 serial line interfaces RS485/232, 1 USB Host interface, 1 Ethernet interface .

Preloaded software to manage up to 8 TM3P instruments. Libraries for other PLCs and HMI viewers are available upon request.

DIMENSIONI



TECNA

Distribuito da /Distributed by